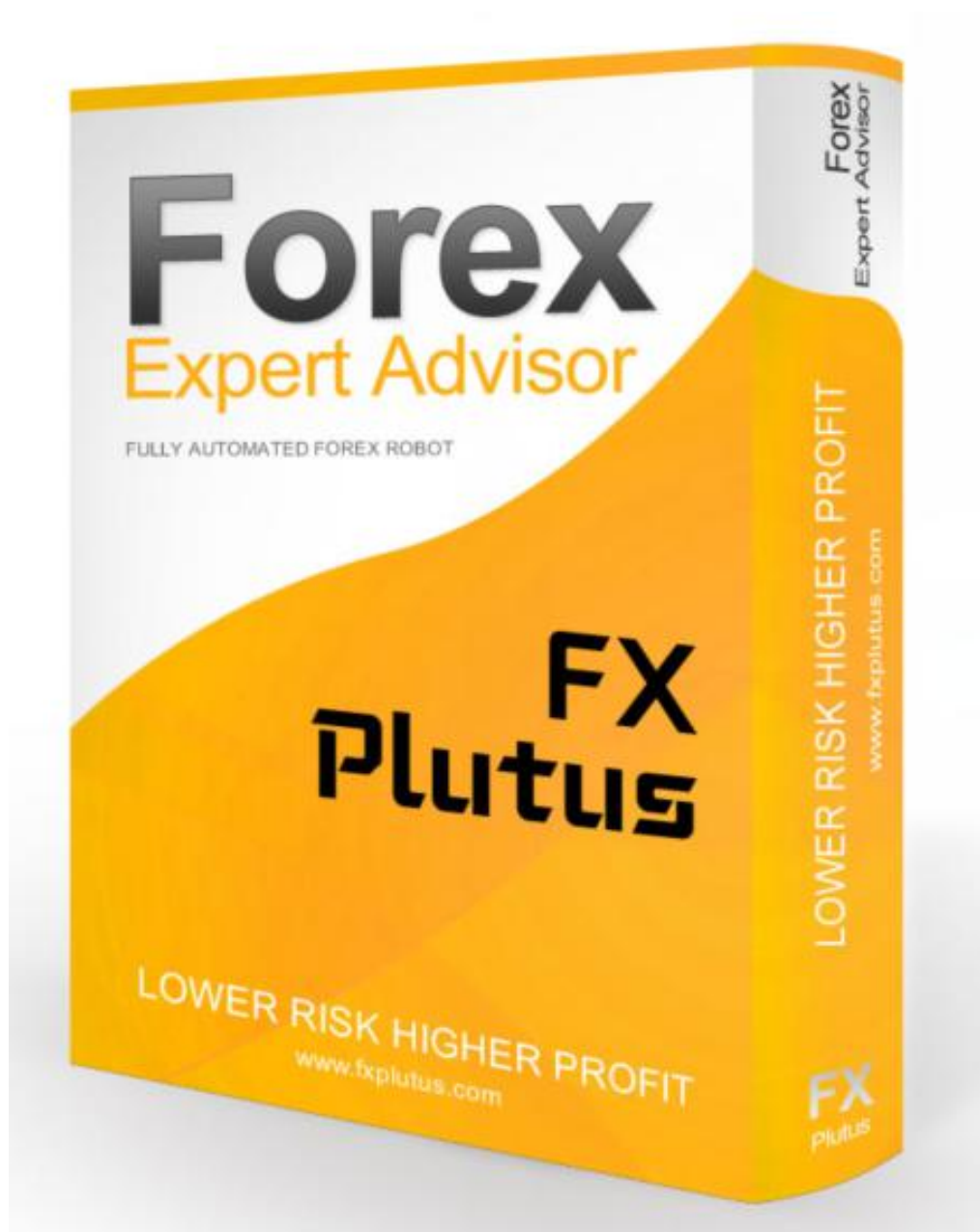


Fx Plutus EA User Manual



Dear User,

First of all, thank you for purchasing the professional Fx Plutus Expert Advisor.

Fx Plutus Robot is developed by a professional team with many years of experience in the forex market. With the unique strategy of Fx Plutus Robot enables you to have big profit and compatible results.

Our aim is to provide our customers the best service, as a result, here you can find the User Guide of the Expert Advisor. This Guide contains all the necessary information in order to install and set up the EA perfectly. Please make sure you read the Guide carefully in order to use the EA!

We wish you a lot of success!

Bests,

Team Fx Plutus

Contents

System requirements	3
Broker requirements	3
How to install Fx Plutus Robot	4
How to activate Fx Plutus Robot	6
Trading pairs	6
Input Setting Descriptions.....	6

System requirements

- √ 1 GB RAM
- √ 1.5 GHz processor
- √ Windows Vista/7/8/10 or Windows Server 2008 or higher
- √ internet connection

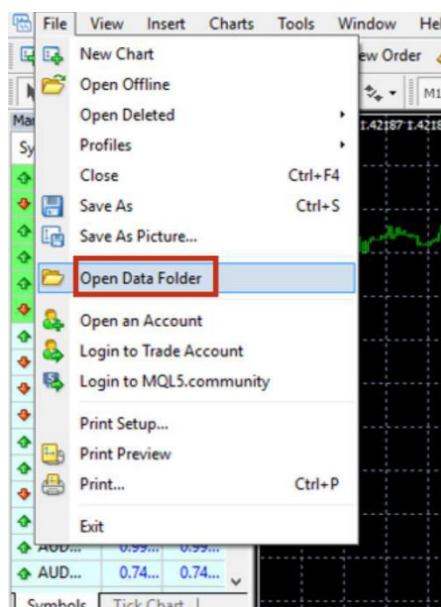
Broker requirements

- √ Metatrader 4 platform
- √ low spread with commission fee (ECN account)
- √ 5 digits price feed

How to install Fx Plutus Robot

After downloading and extracting the Fx Plutus Robot ZIP file, you will have to do the following:

1. In your running Metatrader4 terminal, click on “File” and select “Open Data Folder” .



2. Select the “MQL4” folder

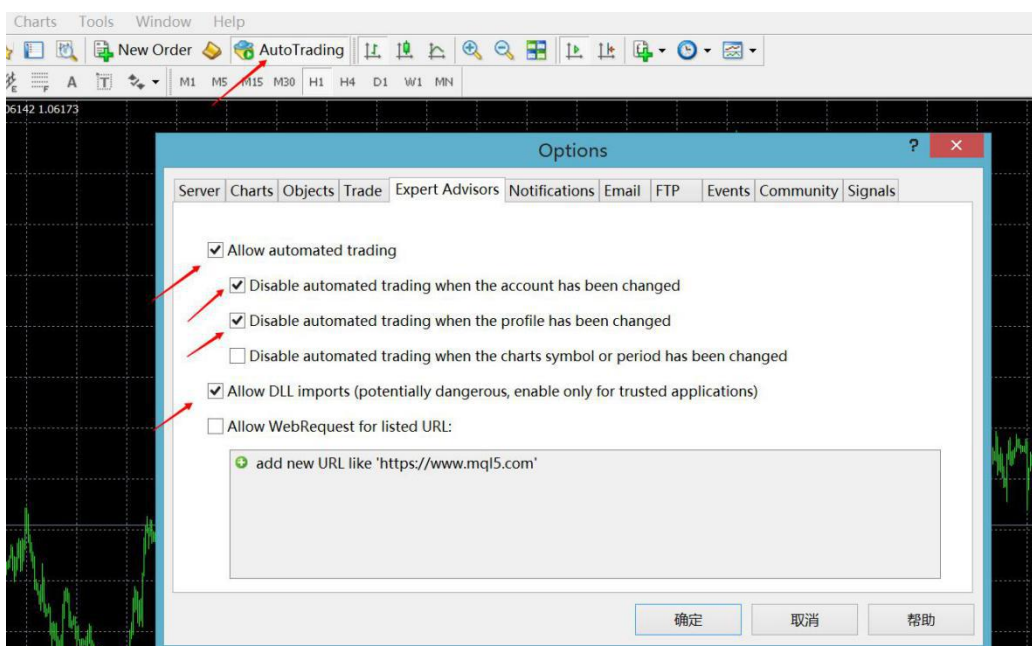
config	2017/1/30 13:40	文件夹
history	2017/3/26 20:12	文件夹
logs	2017/4/14 10:56	文件夹
MQL4	2017/1/25 23:23	文件夹
profiles	2017/4/8 13:32	文件夹
templates	2017/4/13 16:54	文件夹
tester	2017/4/13 23:01	文件夹

3. Double click to “Experts” and copy “FXplutus.ex4” file to the folder.

Experts	2017/4/13 16:55	文件夹
Files	2017/4/8 13:23	文件夹
Images	2017/2/10 23:12	文件夹
Include	2017/1/25 23:23	文件夹
Indicators	2017/4/13 16:54	文件夹
Libraries	2017/4/13 13:22	文件夹
Logs	2017/4/14 10:56	文件夹
Presets	2017/2/26 10:21	文件夹
Projects	2017/1/25 23:23	文件夹
Scripts	2017/3/24 12:49	文件夹

4.Restart terminal

5.Setting up MetaTrader terminal.To be able to trade with Expert Advisors, you need to enable Expert Advisors in your terminal and allow dll calls.



How to activate Fx Plutus Robot

After purchasing EA, you need to send us your trading account number for activating your license. You can change the account number at any time, free of charge.

Please contact: support@fxplutus.com

Trading pairs

EA supports trading on any currency pairs: please attach EA to all charts you wish to trade. However, after a long-term backtest, we suggest using Fx Plutus EA on AUDNZD and EURCHF

Time frame :any

Recommend Brokers: IC markets, Fxopen, Gomarkets, or any other ECN brokers.

NOTICE: Although FxPlutus EA is insensitive to spreads, we still suggest using ECN brokers to generate best result for you.

Input Setting Descriptions

1. AutoMM--You can choose two options: "true" and "false".

2. Risk--The lot size is calculated as a fixed percentage of the deposit. switch "AutoMM" to "true" when you would like to use Risk mode. The percentage is adjusted by the variable Risk. If Risk = 10 , then for the

deposit of 10000\$ the lot size will be 0.1 (1 lot = 100,000\$). For other deposits, the lot size will be scaled accordingly.

3. Fixed lots--The lot size of each trade is specified explicitly by the user. In order to enable this scheme, switch "AutoMM" to "false" when you would like to use Fixed lot mode.

4. MagicNumber--The expert advisor's unique magic number which prevents the EA from interfering with the trades of other EAs on your Mete Trader 4 paltform.No need to adjust.

5. MaxSpread--The maximal spread (in pips) at which the EA is allowed to open trades.No need to adjust.

6. MaxSlippage--The maximal slippage (in pips) at which the EA is allowed to open trades.No need to adjust.

If you have any questions or suggestions, Please feel free to contact us at

support@fxplutus.com

Yours sincerely,

<http://fxplutus.com/>

FxPlutus Team