



info@mathfxpro.com

U.S. Government Required Disclaimer - Commodity Futures Trading Commission Futures, Currency and Options trading has large potential rewards, but also large potential risk. You must be aware of the risks and be willing to accept them in order to invest in the futures and options markets. Don't trade with money you can't afford to lose. This is neither a solicitation nor an offer to Buy/Sell futures or options. No representation is being made that any account will or is likely to achieve profits or losses similar to those discussed on this web site. The past performance of any trading system or methodology is not necessarily indicative of future results.

CFTC RULE 4.41 - HYPOTHETICAL OR SIMULATED PERFORMANCE RESULTS HAVE CERTAIN LIMITATIONS. UNLIKE AN ACTUAL PERFORMANCE RECORD, SIMULATED RESULTS DO NOT REPRESENT ACTUAL TRADING. ALSO, SINCE THE TRADES HAVE NOT BEEN EXECUTED, THE RESULTS MAY HAVE UNDER-OR-OVER COMPENSATED FOR THE IMPACT, IF ANY, OF CERTAIN MARKET FACTORS, SUCH AS LACK OF LIQUIDITY. SIMULATED TRADING PROGRAMS IN GENERAL ARE ALSO SUBJECT TO THE FACT THAT THEY ARE DESIGNED WITH THE BENEFIT OF HINDSIGHT. NO REPRESENTATION IS BEING MADE THAT ANY ACCOUNT WILL OR IS LIKELY TO ACHIEVE PROFIT OR LOSSES SIMILAR TO THOSE SHOWN.

All information on this website or any e-book or software purchased from this website is for educational purposes only and is not intended to provide financial advice. Any statements about profits or income, expressed or implied, does not represent a guarantee. Your actual trading may result in losses as no trading system is guaranteed. You accept full responsibilities for your actions, trades, profit or loss, and agree to hold Math FX Pro and any authorized distributors of this information harmless in any and all ways.

Math FX PRO Copyright 2016. All Rights Reserved.
No duplication or distribution allowed without written consent from Math FX PRO.

PREPARATION NOTES

You must activate Math FX PRO for your account regardless of whether it is a DEMO or LIVE account. You can only use one account per license at a time, but you can switch accounts whenever you would like to.

To activate your license or switch accounts anytime: [Click Here](#)

MATHFXPRO does not trade every day. It trades on average 300 to 500 times per year.

Please follow lot size recommendations for safest results, but you can of course adjust it according to your risk appetite.

You will need to install Meta Trader 4 platform, which is absolutely free and provided by most Forex brokers. Consider checking out one of the recommended Forex brokers in members' area for best results or the one's provided here.

Please note that MathFxPro works in all brokers

This Broker is Best With ECN Account Type: [Click Here](#)

Meta Trader 4 must be open and running 24 hours a day while the Forex market is trading. This means your computer must be on and not sleeping. Alternatively you can use a VPS, which is a virtual computer, and then this is not an issue. You can find recommendations in members' area. Or use recommended VPS below.

VPS Service With 1GB Ram, Win 2008, No VNC, Value Plan: [Click Here](#)

TROUBLESHOOTING ISSUES

Math FX PRO is fairly easy to setup. But one issue that rarely arises, which is quite minor, is the software not showing up in the Meta Trader 4 platform.

For now you can skip over this, unless you run into this issue. Here's how to fix it.

1. Run the Math FX PRO installer and select Add MT4 folder when it prompts you to select where to install.
2. Select your Desktop folder, and then click OK. Now complete the installation.
3. Open Meta Trader 4 and click File, Open Data Folder, then double click MQL4.
4. Place the files from the Desktop into the respective folders, Experts -> .EX4
Libraries -> .DLL.
5. Now run Meta Trader 4 and problem solved.

RECOMMENDATIONS

You will need a few items before installing Math FX PRO

- Pick a Forex broker... I have a few recommendations in members' area.
- Install Meta Trader 4 (provided by your broker free).
- Use a VPS (virtual computer). A recommendation, not urgent to utilize.

Forex Broker for US Traders: [Click Here To Sign Up](#)

Recommended reliable VPS service: [Click Here for VPS](#)

HOW TO INSTALL MATH FX PRO

STEP 1: Click on the MathFxPrp (Application) EXE from the ZIP file.

STEP 2: Click NEXT until you reach the terms, and agree to the terms.

STEP 3: You will have the option to choose, which Broker Meta Trader 4 to install to. Check off, by clicking the box for the broker, to select to install to that Meta Trader 4, if there is no check mark. Uncheck the boxes to the Meta Trader 4's you do not want to install to. Click NEXT until complete.

STEP 4: Next click FINISH.

ACTIVATE MATH FX PRO – FOR YOUR ACCOUNT

You will need to activate your login number, which is your Meta Trader 4 account number.

You can use only one account at a time for each license you own whether DEMO or LIVE. You can switch accounts anytime.

Go to <http://www.mathfxpro.com/activation> to activate your license.

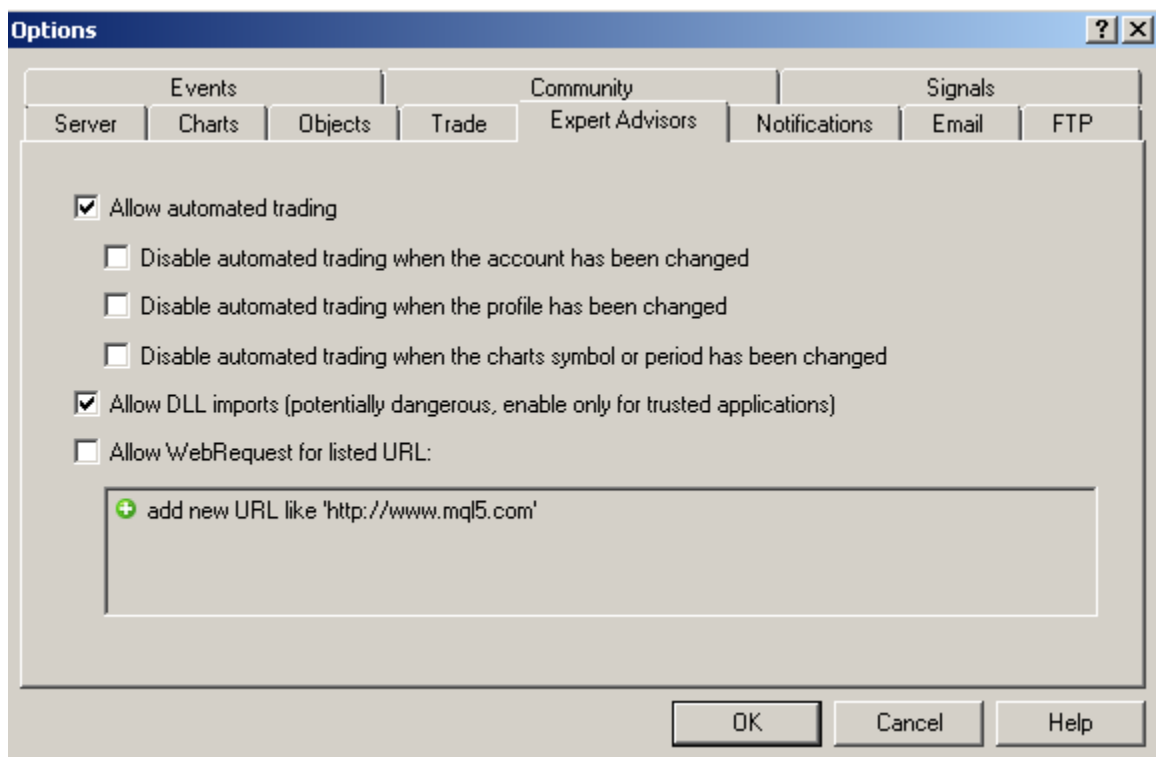
You can now proceed to setup Math FX PRO in Meta Trader 4, further instructions on the next page.

MAKE SURE META TRADER 4 IS SETUP PROPERLY

Here's a few settings to check for in Meta Trader 4 to make sure everything is OKAY.

Click TOOLS, then OPTIONS, then click EXPERT ADVISORS

Make sure the check marks match that of shown below:



Please note that for better performances please runs the Mathfxpro on eurjpy

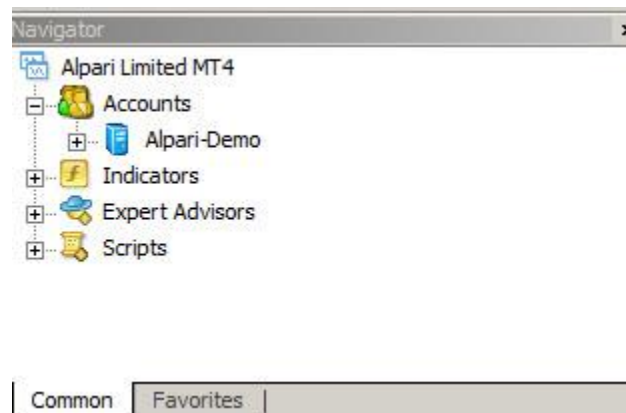
You will need to open 1 trading charts in Meta Trader 4. They look like the image below. To open a new chart please click FILE -> NEW CHART... and open:

Eurjpy

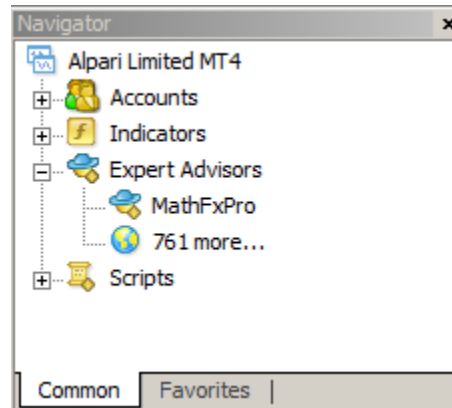


Click on each chart that popped up and click **H1** at the TOP middle bar of MT4. You must do that for each chart individually.

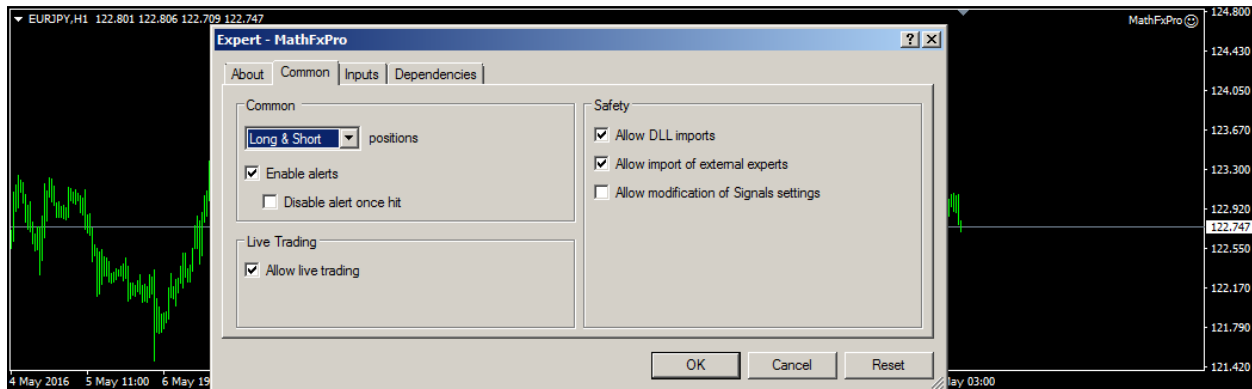
On the left screen you will see the following under the Navigator Box. Click the [+] next to Expert Advisors.



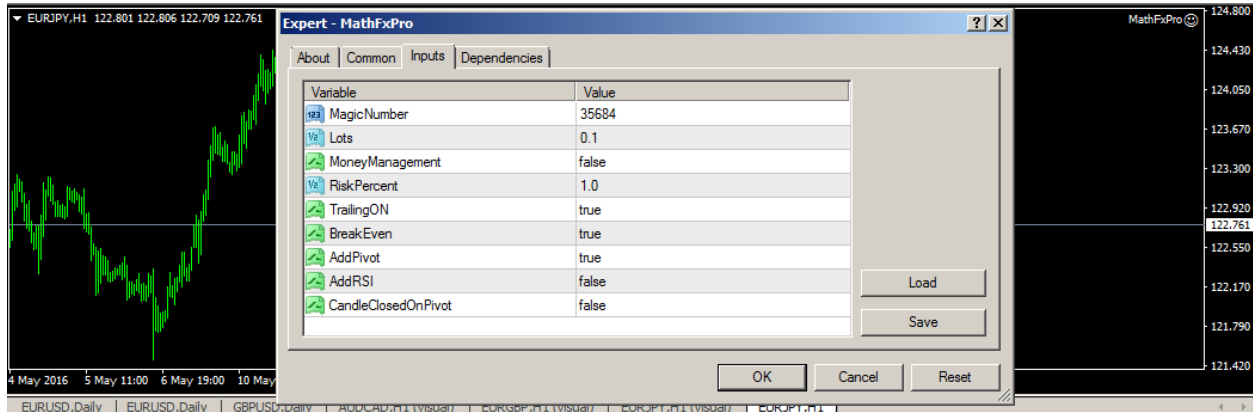
Look for Math FX PRO in the expert advisors list. Click Math FX PRO and drag it to chart on the right that you opened. **(Please read next part before completing this step)**



Make sure the check marks match the image below for the window for each chart (click Common):



I do not recommend changing any settings.



Static Lot Size Setting Recommendations Based On Your Account Size And Risk Appetite

Account balance	Money Management	Risk Percent
500\$ to 1000\$	False	1%
1000\$ to 3000\$	False	5%
Up to 10,000\$	True or False <small>(depends on your risk)</small>	1%
Over 10,000\$	True	1%

SETTINGS

I do not recommend changing any settings.

Magic Number: **Magic Number**

Lots: **Fixed Lot Size**

Money Management: if you select "false" it will trade according to your risk you will enter in Risk percent, if you select "true" it will increase the Lot size trade by trade.

Risk Percent: **change percentage of risk in each trade**

Trailing On: **Enable/Disable, trailing Stop**

Break Even: **Enable /Disable, set TP to the enter price**

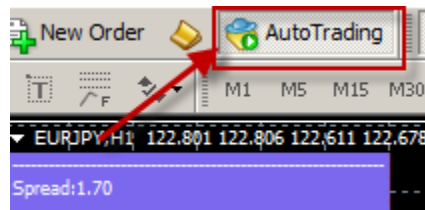
Add Pivot: **false/true, more filter for each trade**

Add RSI: **false/true, more filter for each trade**

Candle close on pivot: **false/true, more filter for each trade**

LAST CHECK CONFIRMATIONS

Make sure the Expert Advisors button is pushed in and GREEN.
And for each chart it should show M15 indented.

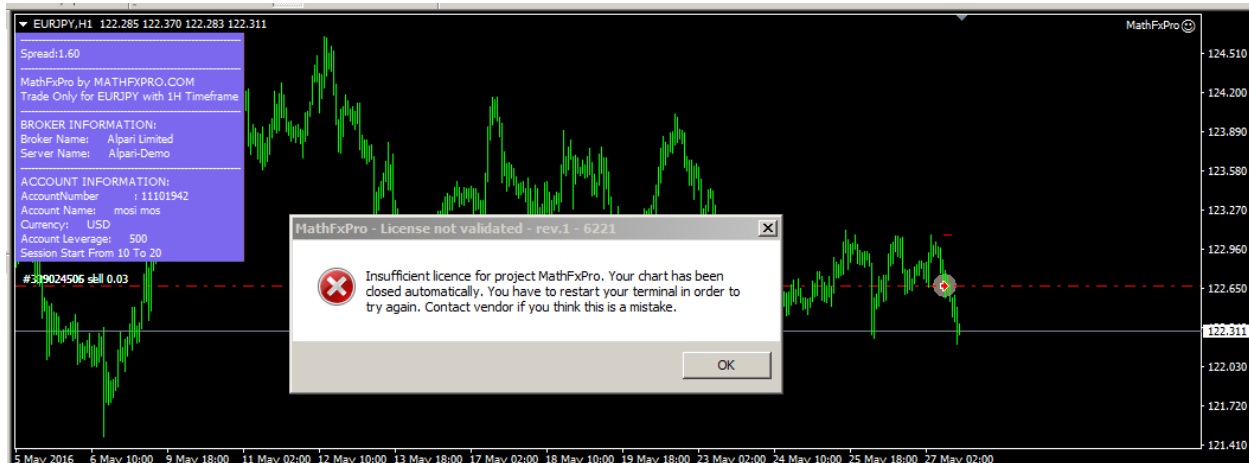


On the bottom of your screen you can check Journal tab and Expert tab for errors.

The robot will then load up and show the following message. If market is closed it will be stuck on **INITIALIZATION...** until market opens. When market opens it will show more data. The **padlock is normal** and means your license is activated.



If for any reason you have seen this error accidentally it means the license you already activated is belong to this account you should change your license and active your license exactly with your trading account number



Here you can change your trading account and active you're trading account

<http://mathfxpro.com/activation>

Support Inquiries: info@mathfxpro.com